

Butterflies of Coole Park



Ringlet - widespread and common in damp meadows, marshes, along hedgerows.
Feeds on: grasses



Brimstone – seen in damp woodland and scrub, hedgerows and open ground. Feeds on: Buckthorn.



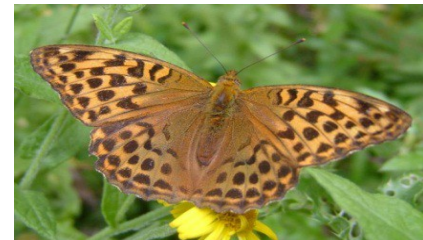
Speckled Wood – woodland, gardens and hedgerows. Feeds on: grasses.



Meadow Brown – seen in wetlands, grasslands and hedgerows. Feeds on: grasses.



Green Veined White – common and widespread, prominent veins on underside. Feeds on: watercress, cabbage. Prevalent in August



Silver Washed Fritillary - female larger and darker than male. Seen in sunny areas of deciduous woodland and hedgerows. Adult often on bramble flowers. Prevalent in August



Peacock – common all over Ireland. Feeds on: Nettles.